

Sub-Slab Soil Gas and Indoor Air Sampling

Motors Liquidation Company
Moraine, Ohio

Nadine Weinberg, Vapor Intrusion Expert

February 17, 2011

Overview of Sampling Process

- Sign access agreement
- Schedule sampling
- Sampling dependent on home construction
- Steps in sample process
 - Building survey
 - Sampling procedures

Scheduling Work



- Must receive signed access agreement
- Work Schedule
 - Visit 1 - 90 minutes- building survey and sample port Installation
 - Visit 2 –30 minutes- start indoor air sample, minimum 24-hrs after visit 1
 - Visit 3 (optional) – 10-minutes- check on indoor air sample half way into sample period
 - Visit 4 – 60-minutes- retrieve indoor air sample, collect sub-slab sample

Building Survey

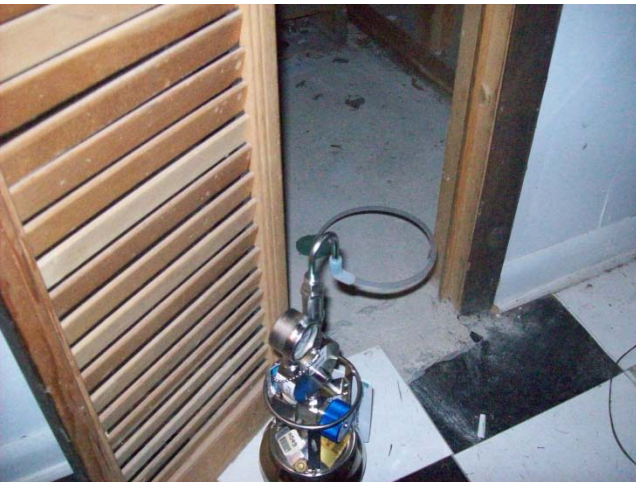
- Assess condition of floor slab, basement walls
- Look for drains, sumps, other pathways
- Conduct product inventory
 - Identify background sources (heavy cleaners and chemicals)
 - Use instrument (PID) to locate chemicals
 - Remove products 24-hours before sampling

A photograph of a cluttered basement or workshop. In the foreground, there's a red bicycle leaning against a shelf on the right, a blue storage bin in the center, and various household items like a green gas cylinder and a white table on the left. A workbench with tools and a pegboard is visible in the background. The floor is dark and covered with debris, and the walls are white with exposed pipes and wiring. A single light fixture illuminates the space from the ceiling.

Sub-Slab Soil Gas Installation and Sampling



- Staff and homeowner will work together to find suitable location
 - Drill 1 ½” hole; through slab and 2 inches into subsurface
 - Cement in sample port
 - Small brass visible when finished
- Wait 24-hours prior to sampling
- Helium leak test to ensure integrity of installation
- Collect sample, 30-minutes



Sub-slab Sample Collection and Leak Testing



Indoor Air Sampling



- Remove chemicals / cleaners 24-hours prior to sampling
- Place canister at breathing height (3-5 feet)
- Do not disturb canister during sampling
- Do not smoke, paint, use heavy cleaners, bring in dry cleaning before or during sampling
- Allow sample to collect for 24-hours

What to Expect During Sampling



- Staff will minimize disturbance to your home
- Sample location picked with your input
- Sampling can occur around your schedule, multiple visits necessary – timing between visits critical
- Field team of two professional staff at all times
- SUMMA canisters are odor and noise free
- Results available in about one month

Contacts for Questions?

- Pam Barnett – MLC Project Manager
 - 937-478-8221
- Steve Blow – MLC Public Relations
 - 248-554-3500